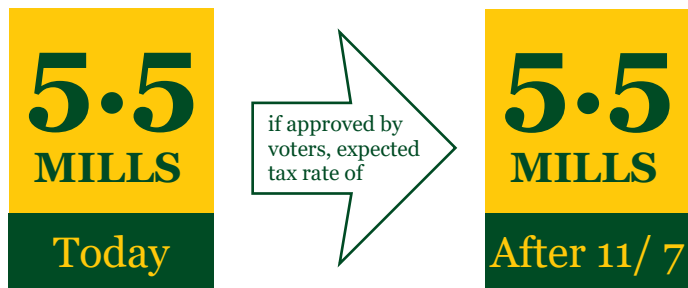


## BOND PROPOSAL DETAILS

On Tuesday, November 7, the Howell Community will vote on a bond proposal. If approved, the bond would provide \$258,000,000 to fund the highest priority improvements in each of the district's schools, with no expected tax rate increase.

The proposal would also provide funding to construct two new, modern replacement buildings for Northwest and Southwest elementary schools. At over 70 years old, both of the current facilities would require significant investments that near the cost of their replacement. By constructing new buildings, the district would be able to create new model learning spaces that would serve the needs of students well into the future.

## No Expected Tax Rate Increase



## Questions?

visit

[HowellSchools.com/Bond](https://HowellSchools.com/Bond)

or

Contact Superintendent

Erin J. MacGregor

517-548-6234

This fact sheet paid for by Howell Public Schools

## BOND PROPOSAL HIGHLIGHTS

### Safety & Security

- Security cameras
- Traffic control bollards
- Building air quality
- Americans with Disabilities Act upgrades
- Window coverings
- Door hardware and building access controls
- Life safety systems - fire alarm upgrades
- New buses

### Learning Environments

- New modern Northwest Elementary
- New modern Southwest Elementary
- Additional student support space at Challenger Elementary
- Major Renovations and addition at Highlander Way Middle School
- Student furniture upgrades

### Teaching Tools

- Classroom and student instructional technology
- New classroom equipment

### Aging Building Infrastructure

- Pavement replacement
- Select roofing replacements
- Floor covering replacement
- Locker replacement
- Upgrades to air conditioning, boilers and electrical systems
- New temperature control systems for energy efficiency

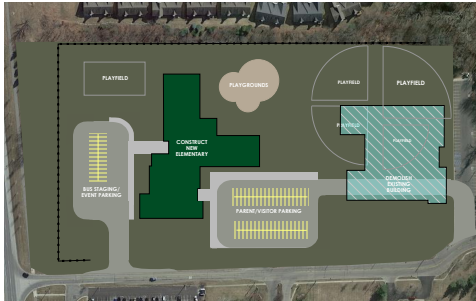
### Community Facilities

- New community center
- New youth baseball & softball fields
- Upgrades to Highlander Aquatic and Fitness Center
- New Memorial Stadium bleachers

## 2 NEW REPLACEMENT ELEMENTARY SCHOOLS

- New modern learning environments
- Replaces 70-year old infrastructure
- New technology, furnishings & equipment
- Improved traffic patterns for student safety
- New playgrounds and fields
- Maintains neighborhood schools

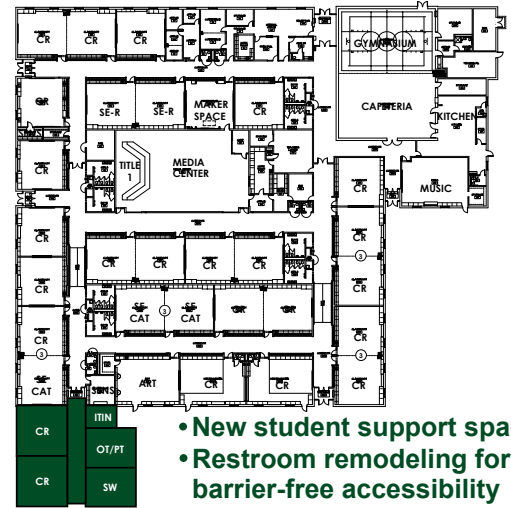
### NORTHWEST



### SOUTHWEST

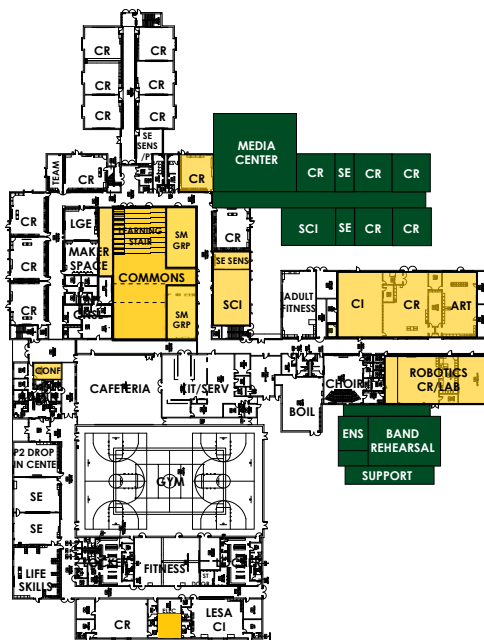


## CHALLENGER ELEMENTARY ADDITIONS & REMODELING

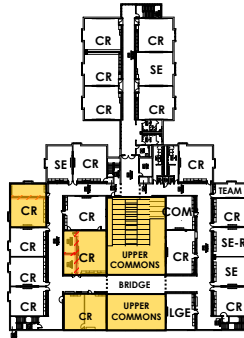


- New student support spaces
- Restroom remodeling for barrier-free accessibility
- Door replacements
- Acoustical improvements
- New student lockers

## ADDITIONS AND MAJOR REMODELING TO HIGHLANDER WAY MIDDLE SCHOOL



FIRST FLOOR



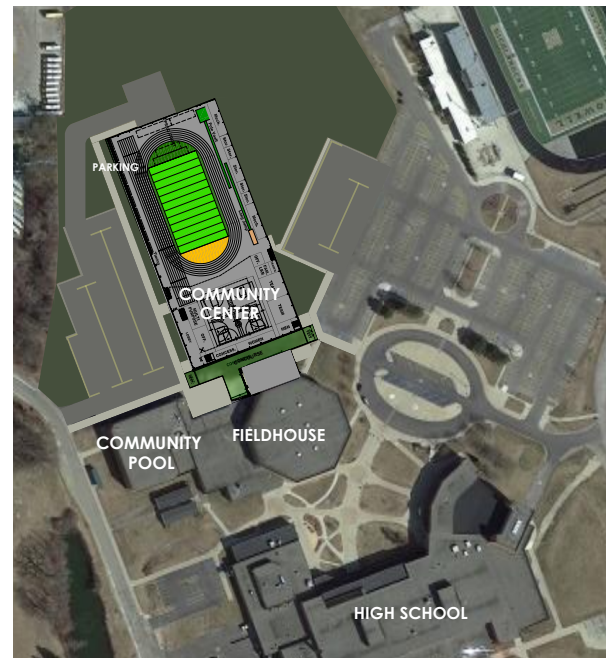
SECOND FLOOR

- New band & ensemble room
- New media center
- New classrooms
- New science lab
- Student commons
- Learning stair
- Classroom expansions
- Expanded robotics lab

LEGEND:



## COMMUNITY CENTER AT HOWELL HIGH SCHOOL



- 200-Meter indoor track
- Artificial turf field
- Areas for field events
- Courts for basketball, pickleball, & volleyball
- Multi-purpose rooms
- Public restrooms, locker rooms & family lockers
- Concessions
- Secure vestibule with office space